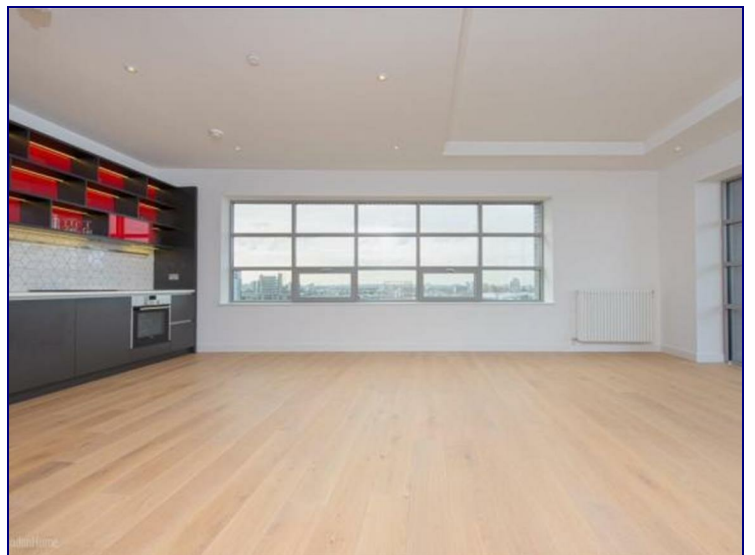


Hope Street, London, E14 0QL



£2,100 Per Month

A large two double bedroom apartment available to rent situated on the 12th floor of a unique new waterside development, London City Island, Docklands E14. Arranged over 894 sq ft and with a south-easterly aspect, accommodation comprises reception room, open-plan to kitchen, master bedroom with en-suite, a further double bedroom, master bathroom and balcony. Secure car park space available for separate negotiation.

Residents of City Island will benefit from a 24 hour concierge, spectacular private leisure club with gymnasium, heated outdoor swimming pool and hydro pool, steam room, sauna and spa, private residents lounge, the grocer, cafe/restaurant and stunning landscaping.

Excellent transport links in to London via Canning Town station.

Please contact us to book your viewing today;





2 BEDROOM

Internal area:
83.1 sqm / 894 sqft

Balcony area:
6 sqm / 64 sqft

Living area:
7370 mm x 5200 mm

Bedroom 1:
3370 mm x 3600 mm

Bedroom 2:
3190 mm x 3350 mm



Energy Efficiency Rating		Current	Potential
Very energy efficient - lower running costs			
(92 plus) A			
(81-91) B		85	85
(69-80) C			
(55-68) D			
(39-54) E			
(21-38) F			
(1-20) G			
Not energy efficient - higher running costs			
England & Wales		EU Directive 2002/91/EC	

Environmental Impact (CO ₂) Rating		Current	Potential
Very environmentally friendly - lower CO ₂ emissions			
(92 plus) A			
(81-91) B			
(69-80) C			
(55-68) D			
(39-54) E			
(21-38) F			
(1-20) G			
Not environmentally friendly - higher CO ₂ emissions			
England & Wales		EU Directive 2002/91/EC	

